

FDS-160

Solar DC Fuse

YUEQING FEEO
ELECTRIC CO.,LTD

► Application

Fuse features light in weight, small in size, low in power loss and high in breaking capacity. This product has been widely used in overload and short circuit protection of electric installation. This product conforms to ICE 60269 standard with all of the rating at the world advanced level.

► Structural Characteristics

- According to IEC60269-6
- Rated current: 40-160A
- Rated voltage: DC 1000V
- Rated breaking capacity:DC 50kA
- Operating class gPV for Solar protection
- See Model of product:NH00



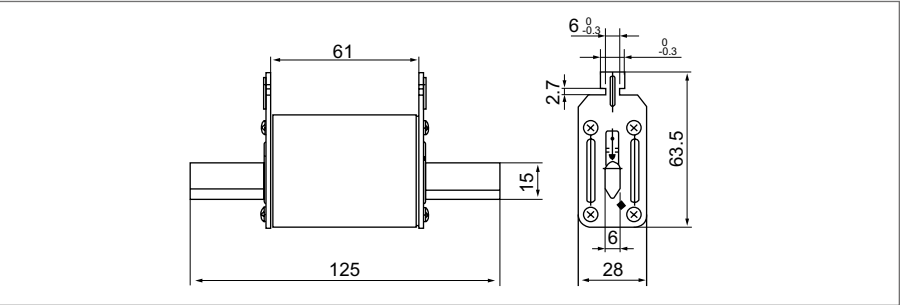
► Specifications

Rated Voltage Ue (V DC)	1000
Rated Current In (A)	40,50,63,80,100,125,160
Biggest Block Ability(KA)	50

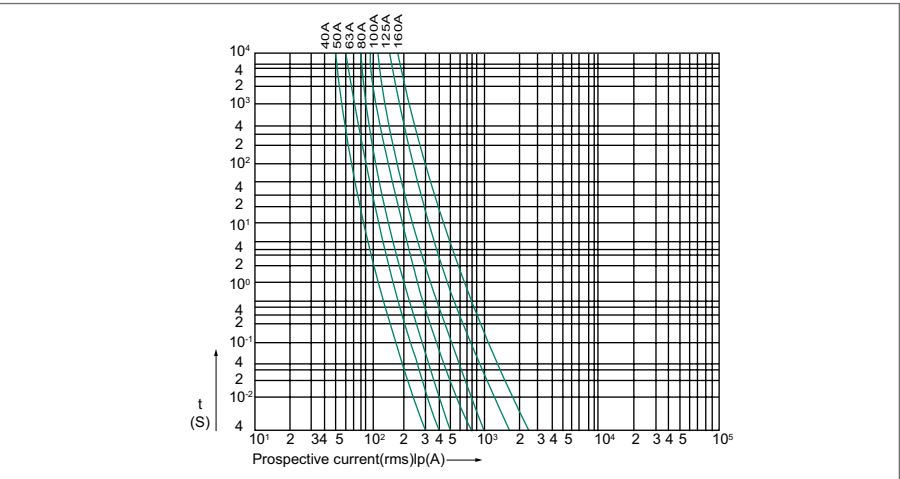
► Electrical Characteristics

Rating	Blowing Time	
	1.13In	1.45In
In ≤ 60	1 hour Min	1 hour Max
63 < In ≤ 160	2 hour Min	2 hour Max

► Dimensions



► Characteristic Curve



FDS-250

Solar DC Fuse

FEEO

► Application

Fuse features light in weight, small in size, low in power loss and high in breaking capacity. This product has been widely used in overload and short circuit protection of electric installation. This product conforms to ICE 60269 standard with all of the rating at the world advanced level.

► Structural Characteristics

- According to IEC60269-6
- Rated current: 32-250A
- Rated voltage: DC 1000V
- Rated breaking capacity:DC 50kA
- Operating class gPV for Solar protection
- See Model of product:NH1



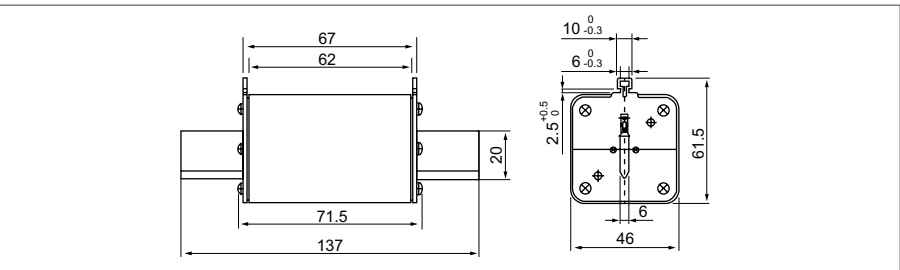
► Specifications

Rated Voltage Ue (V DC)	1000
Rated Current In (A)	32,40,50,63,80,100,125,160,200,250
Biggest Block Ability(KA)	50

► Electrical Characteristics

Rating	Blowing Time	
	1.13In	1.45In
In ≤ 60	1 hour Min	1 hour Max
63 < In ≤ 250	2 hour Min	2 hour Max

► Dimensions



► Characteristic Curve

